



LIME LIGHT
WHAT'S CENTER STAGE AT LIMESTONE PRESBYTERIAN CHURCH • GAFFNEY, SC
January 30, 2025



LPC at BPC This Sunday!

It's this Sunday! We will put a note on the door that invites guests to join us as we worship at Bethesda Presbyterian Church. Worship begins at 10:00 a.m., and we've been invited to stay for lunch following worship. We've been looking forward to this time together. Bethesda is located at 431 Hetty Hill Street.

Join the New Men's Fellowship Group



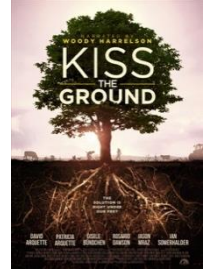
Thursday, February 6, 11:00 a.m., is the initial meeting of LPC's Men's Fellowship Group. Gathering in the parlor, the group will have a devotional, conversation, and time for prayer. The plan is for the group to meet every other week. If this day/time isn't good for you, but you are interested in being part of the group, see Bob McCully.

The Grace Circle will meet on Thursday, February 6, at 7:00 at Carol Berry's house. We will be studying Lesson 6, Climate Change. Carol's address is 143 Saxon Drive.



February 9 6:30 p.m. in the Parlor Kiss the Ground

What does the health of soil have to do with the production of food or the health of the planet? Join the discussion.



On Saturday, February 15, at 5:00 p.m. we'll gather in the FLC for an evening of food, fun, and laughter. We'll start with dinner (steak, potato, salad, dessert) and then proceed to the fun and laughter part as emcee Becky Wheeler asks the questions and some of LPC's favorite couples prove how well (or not!) they know each other. The winning couple will receive a fabulous prize package. We understand there will be a prize for



the audience member who can most closely predict the winners and the score. Tickets are \$10/person and are available from any

member of the Congregational Care/Fellowship Committee or through the church office. Don't miss this!

The Outreach Committee has designated Souper Bowl of Caring as the monthly giving opportunity for



February. Our youth will collect canned goods on Super Bowl Sunday, February 9. Watch for more information.

We Are Praying For...

Emma Rose Cavender; Ed Robinson; Valerie Price Lydia; Martha Phillips; Erika Carroll; Ann Byers; Emily McClain; Mary Aiken; Dallas Scruggs & Family; Lib Allen; Barbara Grinter; Patsy Spires; Kathy Miller Evans; Trish Tong; Hugh Fincher; Fran Ross; Buck Jolley.

CONNECT WITH US: limestone-presbyterian.com/ 864-489-6079
 /limestonepresbyterian  @limestone_pres_gaffney
 109 SOUTH LIMESTONE STREET • GAFFNEY, SOUTH CAROLINA